

Connecting elements for USB Weld AS

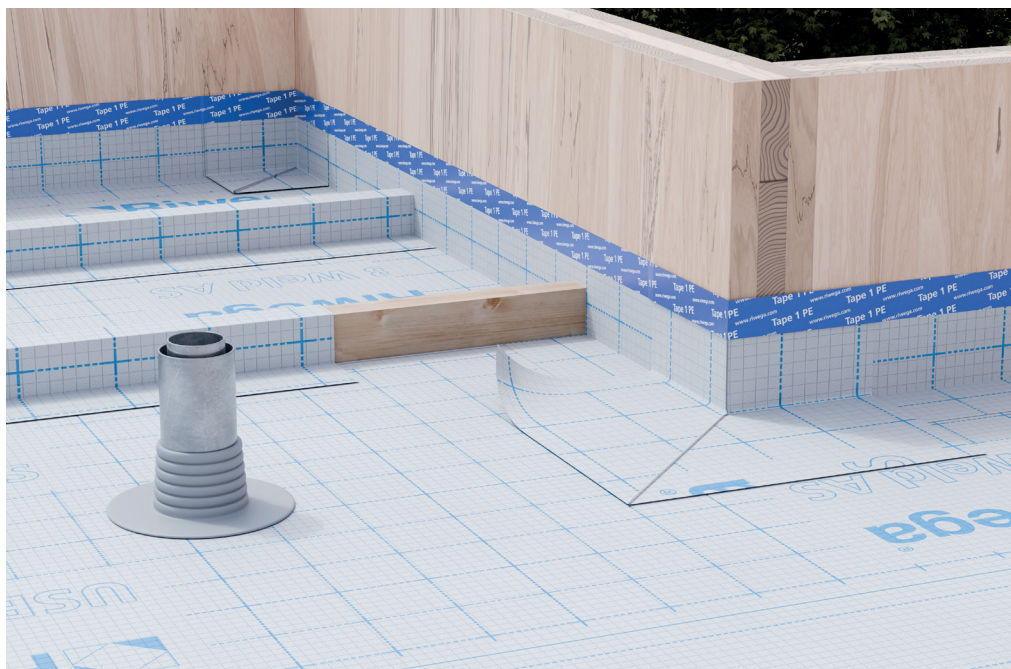
61

R3

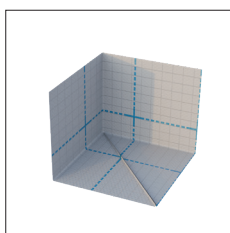
QUICK OVERVIEW: STRENGTHS

Essential for completing the system

- Corners and sealing collars
- Hot welding by temperatures from 200°C to 300°C or cold welding with THF Welding Liquid
- Completing elements of the USB Weld AS weldable membrane
- Assurance of perfect corner and through-element sealing

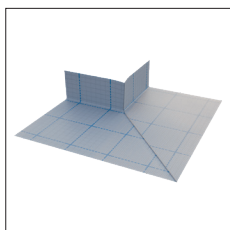


Seal INT (hot or cold weldable internal corner)



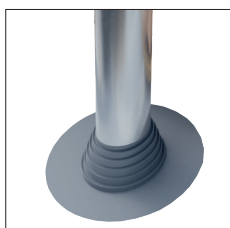
Code	020103531
Material	TPU
Measurements (Width x Length x H)	150 x 150 x 220 mm
Resistance to water passage	W1
Fire reaction class	E
Cold weldability	with solvent THF Welding Liquid
Hot weldability	with hot air 200°C / 300°C

Seal EXT (hot or cold weldable external corner)



Code	020103532
Material	TPU
Measurements (Width x Length x H)	350 x 350 x 140 mm
Resistance to water passage	W1
Fire reaction class	E
Cold weldability	with solvent THF Welding Liquid
Hot weldability	with hot air 200°C / 300°C

Seal DD (hot or cold weldable sealing collar)



Code	020103530
Material	TPU
Internal diameter	min. 90 mm - max. 125 mm
Base external diameter	250 mm
Fire reaction class	E
Cold weldability	with solvent THF Welding Liquid
Hot weldability	with hot air 200°C / 300°C