

Windtop UV 30/210

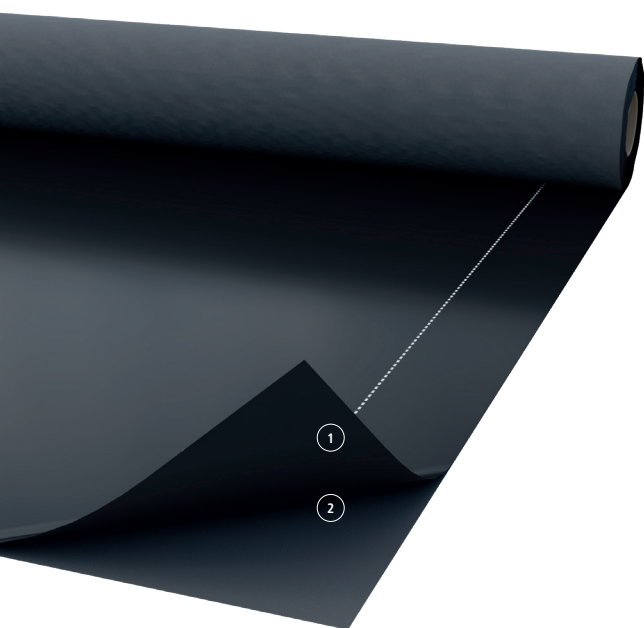
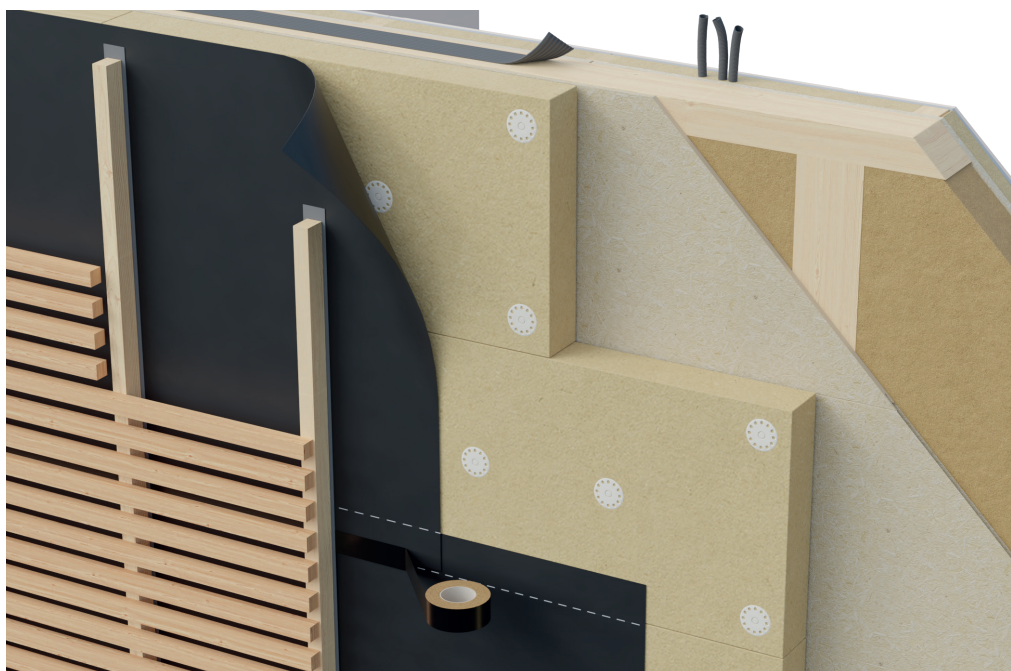
28

R2

QUICK OVERVIEW: STRENGTHS

UV resistance with increased weight

- Waterproof breathable membrane
- Increased mass per unit area for improved mechanical resistance
- Ideal membrane for waterproof and wind-tight thermal insulation in ventilated facades with open joints
- Black color for a low aesthetical impact
- Available in 1,5 m and 3 m version



Composition:

- ① UV stable PUR functional film
- ② Protective layer in PET

Codes and measures

Code	Code TOP SK	Width (m)	Length (m)	Pallet (m ²)
020103015	-	1,5	50	1500
020103012	-	3,0	50	3000

Features:



Classification:



Technical data sheet

Mass per unit area	EN 1849-2	210 g/m ²
Thickness		0,54 mm
Sd value	EN ISO 12572	0,15 m
Water vapour permeability	EN ISO 12572	~ 200 g/m ² /24 h
Water column	EN 20811	>300 cm
Heavy rain test	TU Berlin	passed
Resistance to water passage	EN 1928 (Met. A)	W1
Tensile strength MD/CD*	EN 12311-1	360 / 250 N/50mm
Elongation MD/CD*	EN 12311-1	20 / 25 %
Tear resistance MD/CD*	EN 12310-1	180 / 280 N
Fire reaction class	EN 13501-1	E
UV stability	stable (joints up to max. 30 mm - max. 30 %)	
Weathering without final cladding		3 months
Temperature resistance		-40°/+100°C

*MD = longitudinal CD = transversal

Riwega Srl is not responsible for negligent and improper use of its products